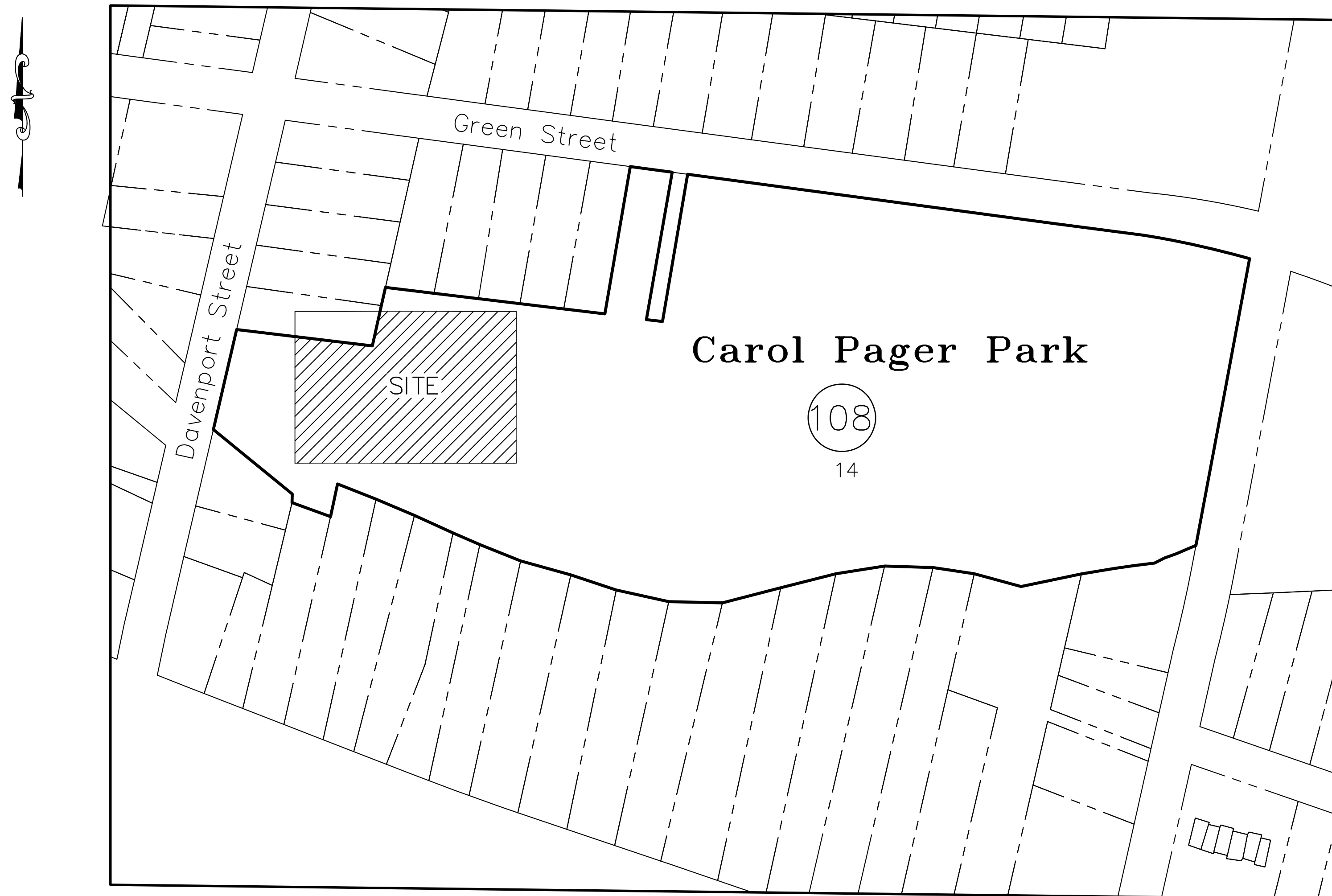


# DREW MCLACHLAN MEMORIAL FUND PROJECT

## CAROL PAGER PARK

LOT 14 BLOCK 108

BOROUGH OF SOMERVILLE SOMERSET COUNTY NEW JERSEY

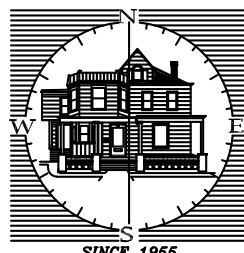


**KEY MAP**

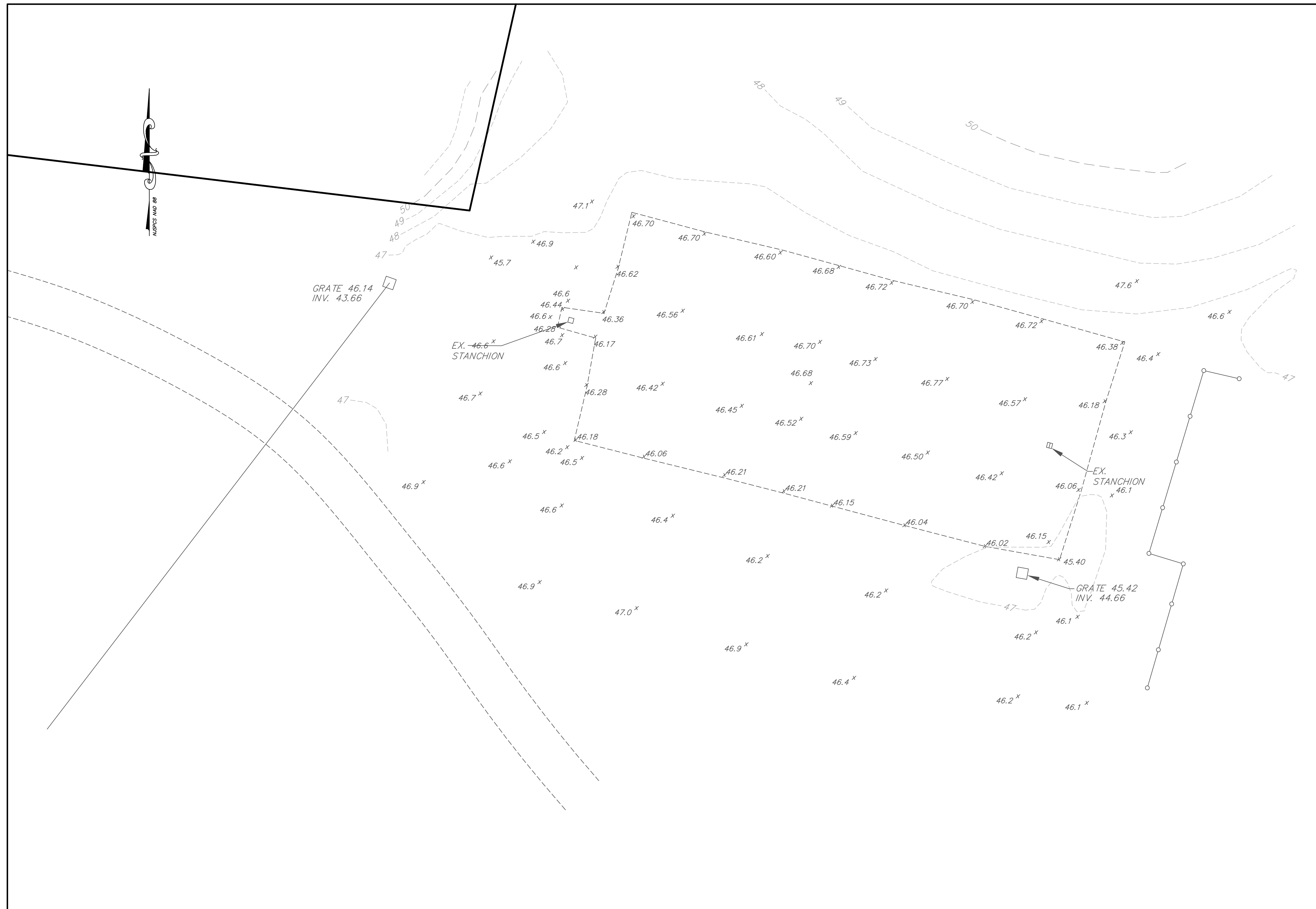
SCALE: 1" = ±100'

**LIST OF DRAWINGS**

SHEET NO.	TITLE
1.	COVER SHEET
2.	TOPOGRAPHIC SURVEY
3.	CONSTRUCTION PLAN
4.	COURT LAYOUT
5.	CONSTRUCTION DETAILS

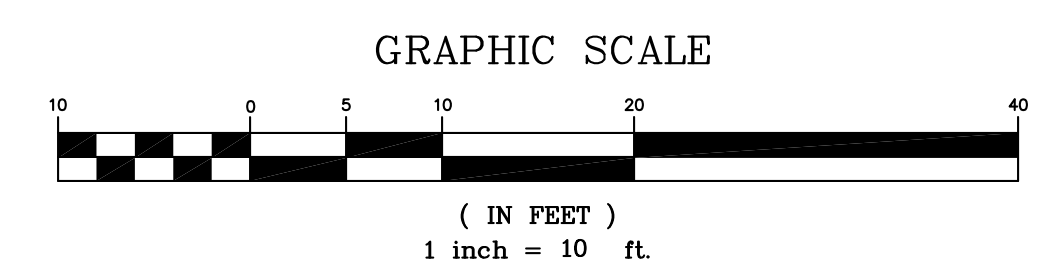
<b>SITE PLAN</b>	
CAROL PAGER PARK LOT 14 BLOCK 108 BOROUGH OF SOMERVILLE SOMERSET COUNTY NEW JERSEY	
	<b>STIRES ASSOCIATES, P.A.</b> ENGINEERS, SURVEYORS & ENVIRONMENTAL CONSULTANTS 43 West High Street, Somerville, New Jersey 08876 Phone (908) 725-0230 Fax (908) 707-0831
<b>CRAIG W. STIRES</b> PROFESSIONAL ENGINEER <i>Craig W. Stires</i>	N.J. LICENSE No39078 DATE 03/02/22
DESIGNED BY: CWS DRAWN BY: CWS CHECKED BY: CWS	SCALE: 1" = 20' PROJECT No22045
DATE	REVISION
	BY
SHEET NUMBER <b>1</b> OF <b>5</b>	

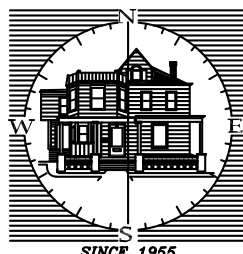
CAUTION: If this document does not contain the raised impression seal of the professional, it is not an authorized original document and may have been altered.



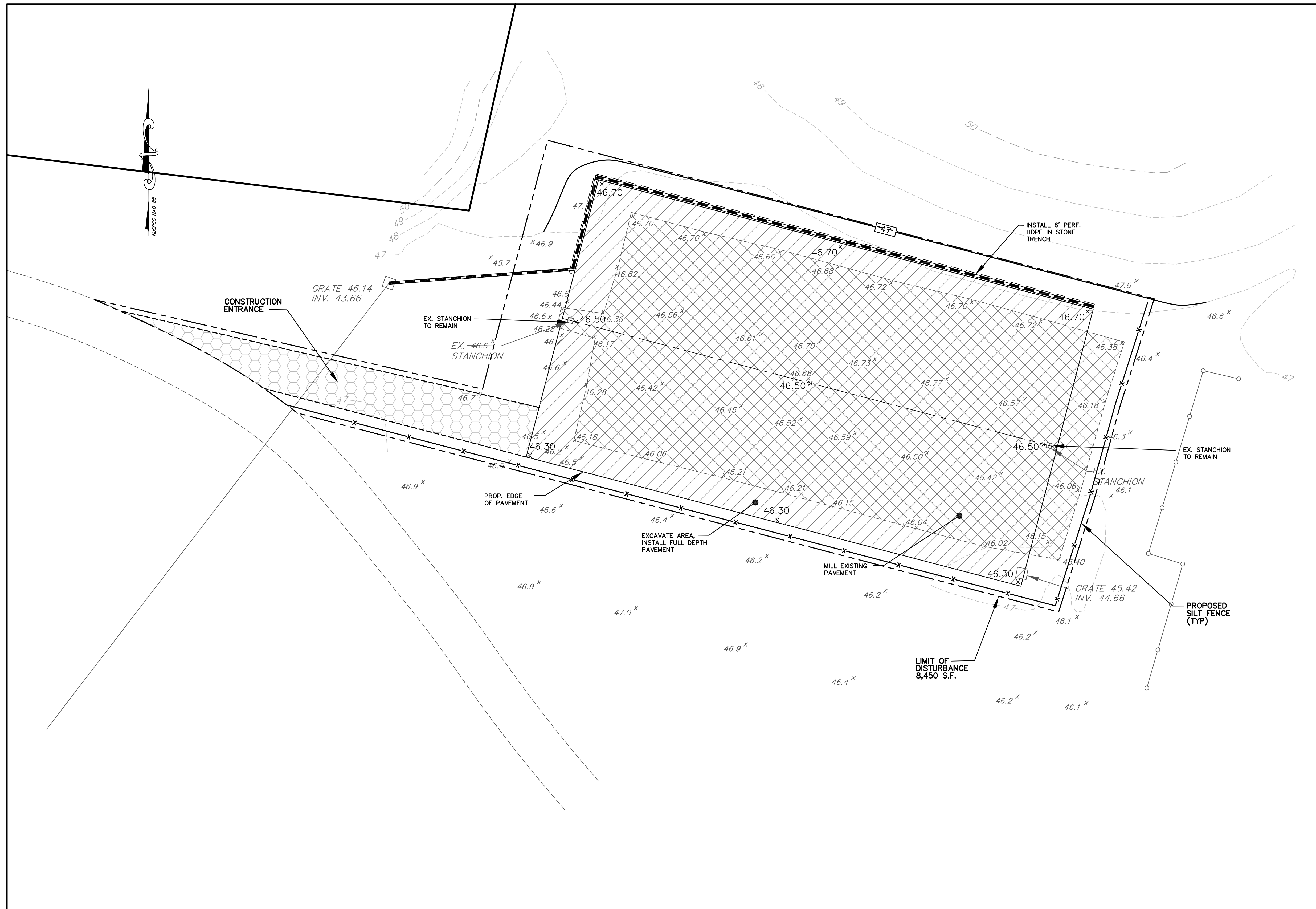
**GENERAL NOTES**

1. TOPOGRAPHIC INFORMATION SHOWN HAS BEEN PREPARED FROM ACTUAL FIELD SURVEYS COMPLETED BY STIRES ASSOCIATES, P.A. PERSONNEL.
2. PRIOR TO THE START OF CONSTRUCTION THE CONTRACTOR SHALL VERIFY THE EXACT LOCATION, SIZE AND DIMENSION OF ALL UNDERGROUND UTILITIES. STIRES ASSOCIATES, P.A. ASSUMES NO RESPONSIBILITY FOR THE LOCATION OF BURIED UTILITIES SHOWN NOR LACK THEREOF. THE CONTRACTOR SHALL CONTACT THE UTILITY, MARK OUT SERVICE BY CALLING 1-800-272-1000 PRIOR TO THE START OF CONSTRUCTION.
3. THE CONTRACTOR SHALL NOTIFY THE DESIGN ENGINEER IMMEDIATELY OF ANY DISCREPANCIES IN THE PLANS, REVISIONS AS MAY BE REQUIRED BY DESIGN DEVELOPMENT, OR FIELD REVISIONS THERETO. FIELD CHANGES MUST BE APPROVED BY THE DESIGN ENGINEER IN WRITING PRIOR TO SUBMITTAL TO THE TOWNSHIP ENGINEER, OR HIS DESIGNATED REPRESENTATIVE, FOR APPROVAL.
4. ALL DEBRIS, CONCRETE CHUNKS, TREE STUMPS AND OTHER UNSUITABLE MATERIAL RESULTING FROM THE SITE GRADING AND EXISTING STRUCTURAL DEMOLITION SHALL BE DISPOSED OF AT AN APPROVED DISPOSAL LOCATION. NO UNSUITABLE MATERIALS SHALL BE PERMITTED TO BE BURIED ON SITE.
5. IN INSTANCES WHERE THE BOROUGH SPECIFICATIONS PROVIDE NO DETAILED SPECIFICATION, THE MATERIALS AND METHODS OF CONSTRUCTION SHALL MEET AND CONFORM TO THE REQUIREMENTS OF "THE STANDARD SPECIFICATION FOR ROAD AND BRIDGE CONSTRUCTION" FOR THE NEW JERSEY DEPARTMENT OF TRANSPORTATION.
6. ANY EXCESS FILL OR ANY OTHER MATERIAL IS TO BE REMOVED FROM THE SITE, THE PROJECT OWNER/APPLICANT SHALL BE RESPONSIBLE FOR ITS PROPER DISPOSAL AND WILL NOTIFY THE SOMERSET-UNION SOIL CONSERVATION DISTRICT AS TO THE PLANNED DISPOSAL SITE LOCATION. IF APPLICABLE, A SOIL EROSION AND SEDIMENT CONTROL PLAN MUST BE SUBMITTED TO, REVIEWED AND CERTIFIED BY THE SOMERSET-UNION SOIL CONSERVATION DISTRICT PRIOR TO ANY MATERIAL REMOVAL FROM THE PROJECT SITE.
7. MAXIMUM ALLOWABLE VEGETATED SLOPES SHALL BE 2:1. ANY SLOPES IN EXCESS OF 3:1 SHALL BE COVERED BY TEMPORARY EROSION CONTROL MATTING.
8. ADDITIONAL SOIL EROSION AND SEDIMENT CONTROL MEASURES MAY BE REQUIRED BY THE SOIL CONSERVATION DISTRICT OR TOWNSHIP ENGINEER IF FIELD CONDITIONS WARRANT THEM.
9. ANY EXISTING WELLS, SEPTIC SYSTEMS AND OIL TANKS MUST BE REMOVED OR ABANDONED IN ACCORDANCE WITH APPLICABLE LOCAL AND STATE CODES.

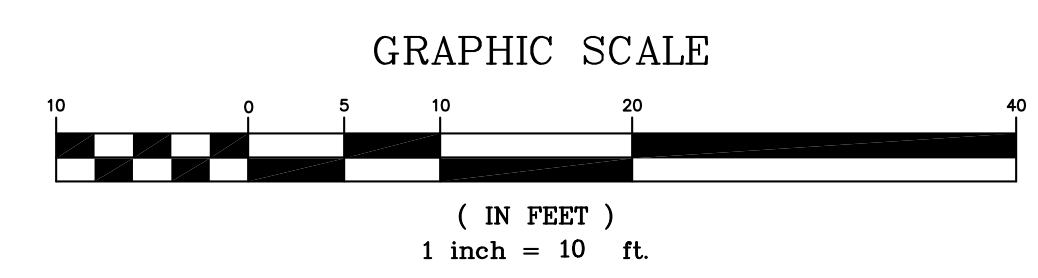


<b>TOPOGRAPHIC SURVEY</b>			
CAROL PAGER PARK LOT 14 BLOCK 108			
BOROUGH OF SOMERVILLE		SOMERSET COUNTY	
NEW JERSEY			
 <b>STIRES ASSOCIATES, P.A.</b> ENGINEERS, SURVEYORS & ENVIRONMENTAL CONSULTANTS 43 West High Street, Somerville, New Jersey 08876 Phone (908) 725-0230 Fax (908) 707-0831			
<b>RICHARD C. MATHEWS</b> PROFESSIONAL LAND SURVEYOR <i>Richard C. Mathews</i>		N.J. LICENSE No. 29353 DATE <u>03/02/22</u>	
DESIGNED BY: CWS		DRAWN BY: CWS	
CHECKED BY: CWS		SCALE: 1" = 10'	
DATE		REVISION	
BY		PROJECT No. 22045	
		SHEET NUMBER	
		2 OF 5	

CAUTION: If this document does not contain the raised impression seal of the professional, it is not an authorized original document and may have been altered.

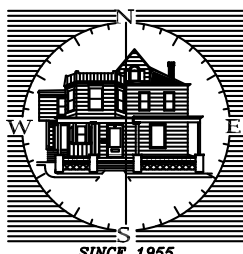


- GENERAL NOTES**
1. TOPOGRAPHIC INFORMATION SHOWN HAS BEEN PREPARED FROM ACTUAL FIELD SURVEYS COMPLETED BY STIRES ASSOCIATES, P.A. PERSONNEL.
  2. PRIOR TO THE START OF CONSTRUCTION THE CONTRACTOR SHALL VERIFY THE EXACT LOCATION, SIZE AND DIMENSION OF ALL UNDERGROUND UTILITIES. STIRES ASSOCIATES, P.A. ASSUMES NO RESPONSIBILITY FOR THE LOCATION OF BURIED UTILITIES SHOWN NOR LACK THEREOF. THE CONTRACTOR SHALL CONTACT THE UTILITY MARK OUT SERVICE BY CALLING 1-800-272-1000 PRIOR TO THE START OF CONSTRUCTION.
  3. THE CONTRACTOR SHALL NOTIFY THE DESIGN ENGINEER IMMEDIATELY OF ANY DISCREPANCIES IN THE PLANS, REVISIONS AS MAY BE REQUIRED BY DESIGN DEVELOPMENT, OR FIELD REVISIONS THERETO. FIELD CHANGES MUST BE APPROVED BY THE DESIGN ENGINEER IN WRITING PRIOR TO SUBMITTAL TO THE TOWNSHIP ENGINEER, OR HIS DESIGNATED REPRESENTATIVE, FOR APPROVAL.
  4. ALL DEBRIS, CONCRETE CHUNKS, TREE STUMPS AND OTHER UNSUITABLE MATERIAL RESULTING FROM THE SITE GRADING AND EXISTING STRUCTURAL DEMOLITION SHALL BE DISPOSED OF AT AN APPROVED DISPOSAL LOCATION. NO UNSUITABLE MATERIALS SHALL BE PERMITTED TO BE BURIED ON SITE.
  5. IN INSTANCES WHERE THE BOROUGH SPECIFICATIONS PROVIDE NO DETAILED SPECIFICATION, THE MATERIALS AND METHODS OF CONSTRUCTION SHALL MEET AND CONFORM TO THE REQUIREMENTS OF "THE STANDARD SPECIFICATION FOR ROAD AND BRIDGE CONSTRUCTION" FOR THE NEW JERSEY DEPARTMENT OF TRANSPORTATION.
  6. ANY EXCESS FILL OR ANY OTHER MATERIAL IS TO BE REMOVED FROM THE SITE. THE PROJECT OWNER/APPLICANT SHALL BE RESPONSIBLE FOR ITS PROPER DISPOSAL AND WILL NOTIFY THE SOMERSET-UNION SOIL CONSERVATION DISTRICT AS TO THE PLANNED DISPOSAL SITE LOCATION. IF APPLICABLE, A SOIL EROSION AND SEDIMENT CONTROL PLAN MUST BE SUBMITTED TO, REVIEWED AND CERTIFIED BY THE SOMERSET-UNION SOIL CONSERVATION DISTRICT PRIOR TO ANY MATERIAL REMOVAL FROM THE PROJECT SITE.
  7. MAXIMUM ALLOWABLE VEGETATED SLOPES SHALL BE 2:1. ANY SLOPES IN EXCESS OF 3:1 SHALL BE COVERED BY TEMPORARY EROSION CONTROL MATTING.
  8. ADDITIONAL SOIL EROSION AND SEDIMENT CONTROL MEASURES MAY BE REQUIRED BY THE SOIL CONSERVATION DISTRICT OR TOWNSHIP ENGINEER IF FIELD CONDITIONS WARRANT THEM.
  9. ANY EXISTING WELLS, SEPTIC SYSTEMS AND OIL TANKS MUST BE REMOVED OR ABANDONED IN ACCORDANCE WITH APPLICABLE LOCAL AND STATE CODES.



**SITE PLAN**

CAROL PAGER PARK  
LOT 14 BLOCK 108  
BOROUGH OF SOMERVILLE SOMERSET COUNTY NEW JERSEY



**STIRES ASSOCIATES, P.A.**  
ENGINEERS, SURVEYORS & ENVIRONMENTAL CONSULTANTS  
43 West High Street, Somerville, New Jersey 08876  
Phone (908) 725-0230 Fax (908) 707-0831

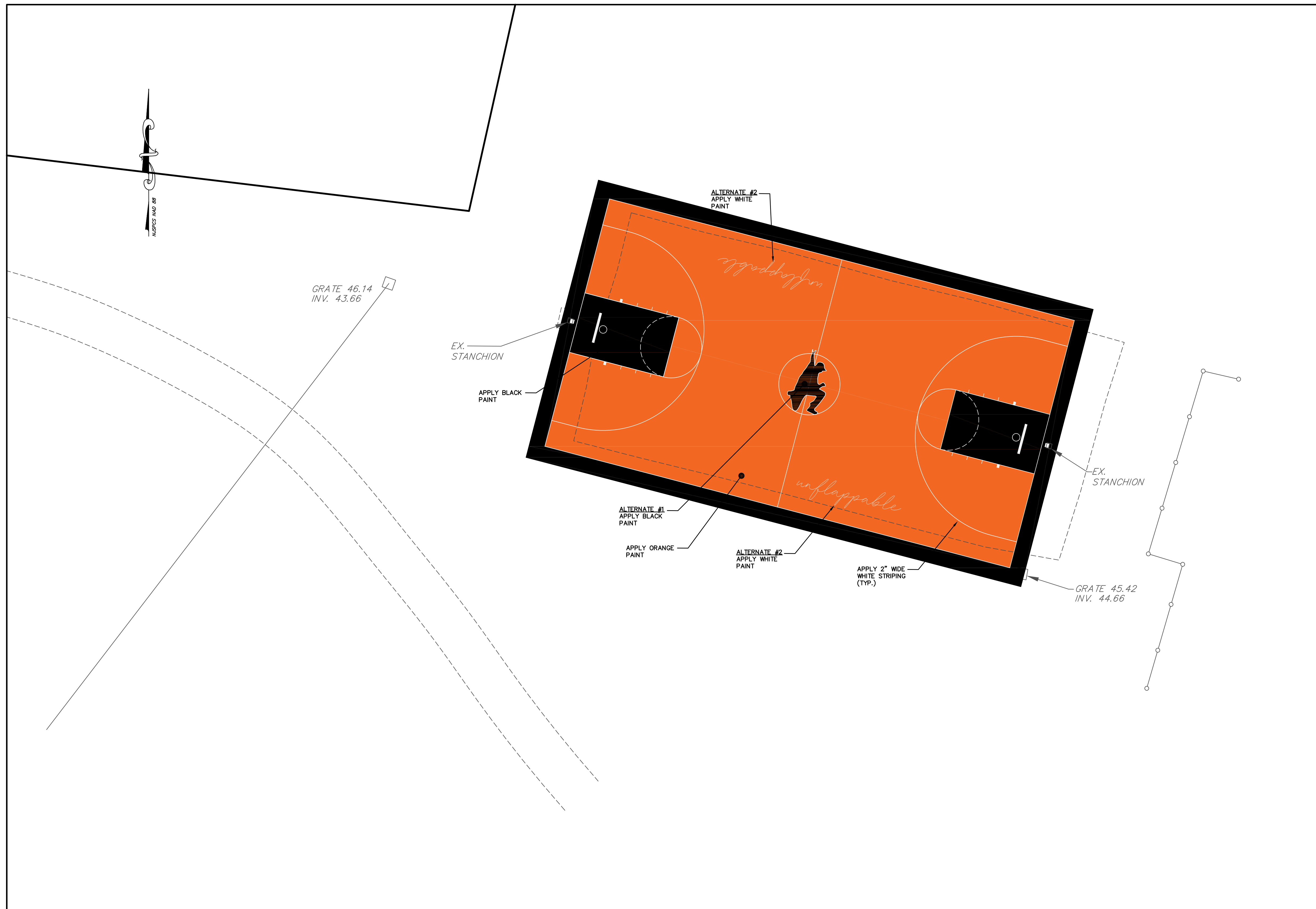
DESIGNED BY: CWS  
DRAWN BY: CWS  
CHECKED BY: CWS  
SHEET NUMBER  
**3** OF **5**

**CRAIG W. STIRES**  
PROFESSIONAL ENGINEER  
*CWS*

N.J. LICENSE No39078  
DATE **03/02/22**  
SCALE: 1" = 10'  
PROJECT No22045

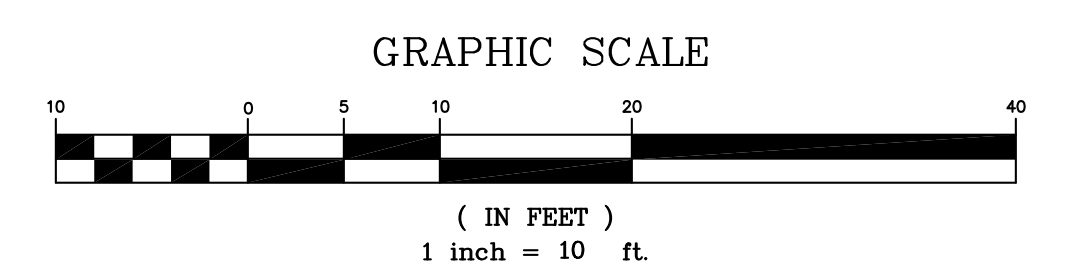
CAUTION: If this document does not contain the raised impression seal of the professional, it is not an authorized original document and may have been altered.

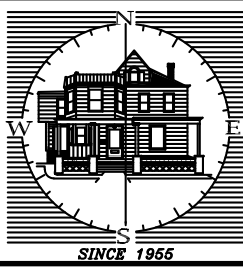
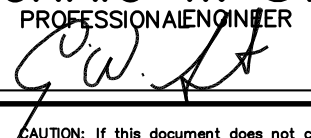
DATE	REVISION	BY



**GENERAL NOTES**

1. TOPOGRAPHIC INFORMATION SHOWN HAS BEEN PREPARED FROM ACTUAL FIELD SURVEYS COMPLETED BY STIRES ASSOCIATES, P.A. PERSONNEL.
2. PRIOR TO THE START OF CONSTRUCTION THE CONTRACTOR SHALL VERIFY THE EXACT LOCATION, SIZE AND DIMENSION OF ALL UNDERGROUND UTILITIES. STIRES ASSOCIATES, P.A. ASSUMES NO RESPONSIBILITY FOR THE LOCATION OF BURIED UTILITIES SHOWN NOR LACK THEREOF. THE CONTRACTOR SHALL CONTACT THE UTILITY MARK OUT SERVICE BY CALLING 1-800-272-1000 PRIOR TO THE START OF CONSTRUCTION.
3. THE CONTRACTOR SHALL NOTIFY THE DESIGN ENGINEER IMMEDIATELY OF ANY DISCREPANCIES IN THE PLANS, REVISIONS AS MAY BE REQUIRED BY DESIGN DEVELOPMENT, OR FIELD REVISIONS THERETO. FIELD CHANGES MUST BE APPROVED BY THE DESIGN ENGINEER IN WRITING PRIOR TO SUBMITTAL TO THE TOWNSHIP ENGINEER, OR HIS DESIGNATED REPRESENTATIVE, FOR APPROVAL.
4. ALL DEBRIS, CONCRETE CHUNKS, TREE STUMPS AND OTHER UNSUITABLE MATERIAL RESULTING FROM THE SITE GRADING AND EXISTING STRUCTURAL DEMOLITION SHALL BE DISPOSED OF AT AN APPROVED DISPOSAL LOCATION. NO UNSUITABLE MATERIALS SHALL BE PERMITTED TO BE BURIED ON SITE.
5. IN INSTANCES WHERE THE BOROUGH SPECIFICATIONS PROVIDE NO DETAILED SPECIFICATION, THE MATERIALS AND METHODS OF CONSTRUCTION SHALL MEET AND CONFORM TO THE REQUIREMENTS OF "THE STANDARD SPECIFICATION FOR ROAD AND BRIDGE CONSTRUCTION" FOR THE NEW JERSEY DEPARTMENT OF TRANSPORTATION.
6. ANY EXCESS FILL OR ANY OTHER MATERIAL IS TO BE REMOVED FROM THE SITE. THE PROJECT OWNER/APPLICANT SHALL BE RESPONSIBLE FOR ITS PROPER DISPOSAL AND WILL NOTIFY THE SOMERSET-UNION SOIL CONSERVATION DISTRICT AS TO THE PLANNED DISPOSAL SITE LOCATION. IF APPLICABLE, A SOIL EROSION AND SEDIMENT CONTROL PLAN MUST BE SUBMITTED TO, REVIEWED AND CERTIFIED BY THE SOMERSET-UNION SOIL CONSERVATION DISTRICT PRIOR TO ANY MATERIAL REMOVAL FROM THE PROJECT SITE.
7. MAXIMUM ALLOWABLE VEGETATED SLOPES SHALL BE 2:1. ANY SLOPES IN EXCESS OF 3:1 SHALL BE COVERED BY TEMPORARY EROSION CONTROL MATTING.
8. ADDITIONAL SOIL EROSION AND SEDIMENT CONTROL MEASURES MAY BE REQUIRED BY THE SOIL CONSERVATION DISTRICT OR TOWNSHIP ENGINEER IF FIELD CONDITIONS WARRANT THEM.
9. ANY EXISTING WELLS, SEPTIC SYSTEMS AND OIL TANKS MUST BE REMOVED OR ABANDONED IN ACCORDANCE WITH APPLICABLE LOCAL AND STATE CODES.



<b>SITE PLAN</b>			
CAROL PAGER PARK LOT 14 BLOCK 108			
BOROUGH OF SOMERVILLE		SOMERSET COUNTY NEW JERSEY	
 <b>Stires Associates, P.A.</b> ENGINEERS, SURVEYORS & ENVIRONMENTAL CONSULTANTS 43 West High Street, Somerville, New Jersey 08876 Phone (908) 725-0230 Fax (908) 707-0831			
<b>CRAIG W. STIRES</b> PROFESSIONAL ENGINEER 		N.J. LICENSE No39078 DATE <u>03/02/22</u>	
DESIGNED BY: CWS DRAWN BY: CWS CHECKED BY: CWS		SCALE: 1" = 10' PROJECT No22045	
		SHEET NUMBER <b>4</b> OF <b>5</b>	

DATE	REVISION	BY

